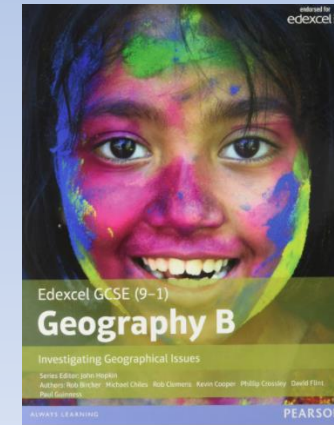
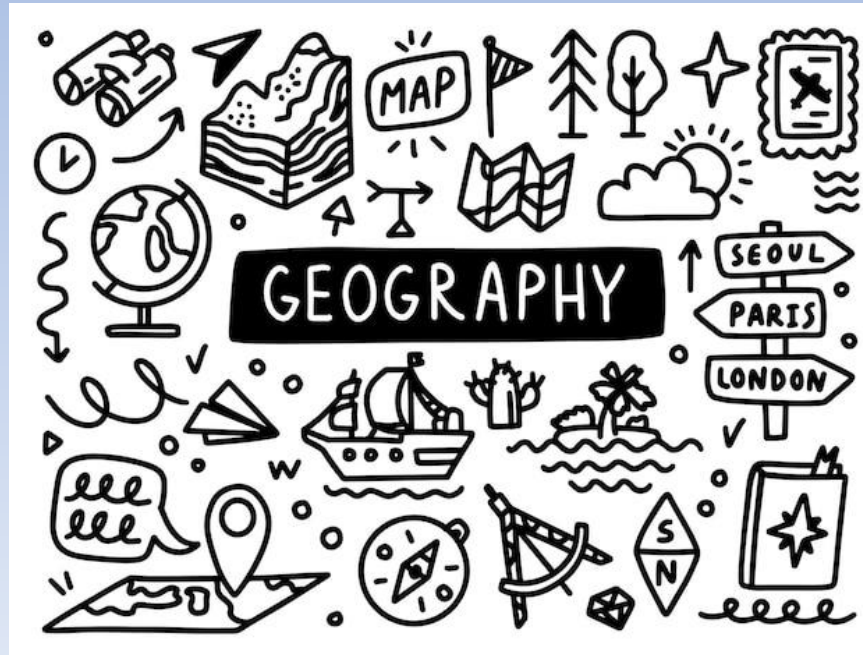
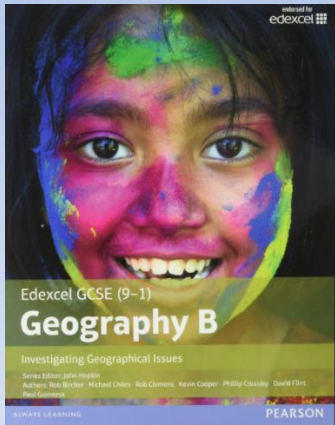
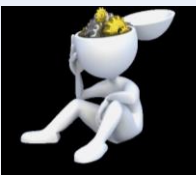


Geography

GCSE



Head of Department : Mrs Obee



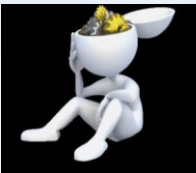
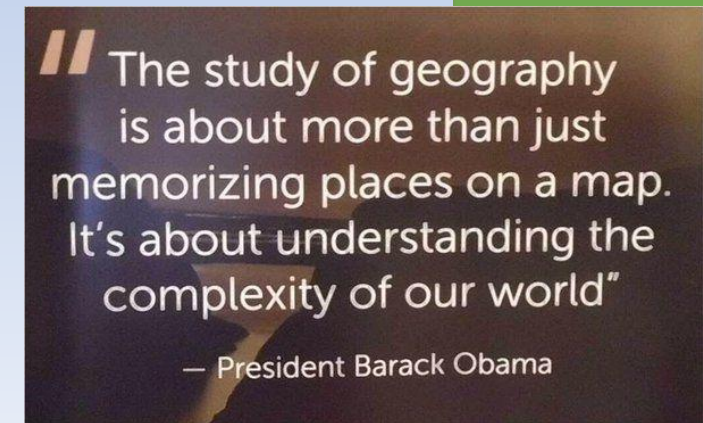
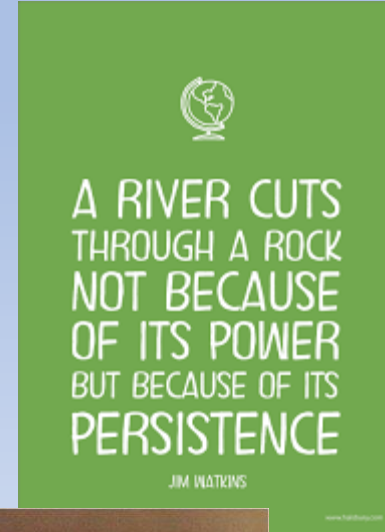
Course Aims.



Geography is a broad based academic subject which will open up options for you in your future. Geography enables young people to become globally and environmentally informed and thoughtful, enquiring citizens.

GCSE specifications for the discipline of geography gives students the opportunity to understand more about the world, the challenges it faces and their place within it.

This GCSE course will deepen understanding of geographical processes, illuminate the impact of change and of complex people-environment interactions, highlight the dynamic links and interrelationships between places and environments at different scales, and develop students' competence in using a wide range of geographical investigative skills and approaches.



Core skills to be developed.



- ✓ Engage in contemporary issue-based topics.
- ✓ Supports progression to undergraduate level Geography.
- ✓ Develop confidence in geographical skills and fieldwork.
- ✓ Develop a holistic understanding of Geography considering locations, place, processes, environments, scales of time and interaction within the human and physical environments.
- ✓ Improve their understanding of the ways in which values, attitudes and circumstances have an impact on the relationships between people, place and environment.
- ✓ Become competent in selecting and using a range of evaluative quantitative and qualitative methods.
- ✓ Apply their knowledge to real world scenarios to allow for effective and analytical understanding and questioning.

Geography is the subject which holds the key to our future.

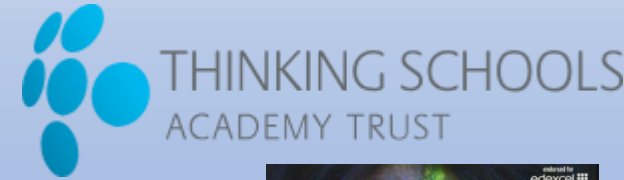
Michael Palin



Mastery Endeavour Thinking



Course Outline.



Paper 1

1 hour & 15 minutes
94 marks (37.5% of qualification)

Topic 1: Hazardous Earth (30 marks)

Topic 2: Development dynamics (30 marks)

Topic 3: Challenges of an urbanising world (30 marks)

The exam includes multiple-choice questions, short open, open response and extended writing questions, calculations and 8-mark extended writing questions.

Paper 2

1 hour & 15 minutes
94 marks (37.5% of qualification)

Topic 4: The UK's evolving physical landscape – including sub-topics 4A: Coastal change and conflict and 4B: River processes and pressures.

Topic 5: The UK's evolving human landscape – including a Case Study - Dynamic UK cities.

Topic 6: Geographical investigations – including one physical fieldwork investigation and one human fieldwork investigation linked to Topics 4 and 5.

The exam includes multiple-choice questions, short open, open response and extended writing questions, calculations and 8-mark extended writing questions.

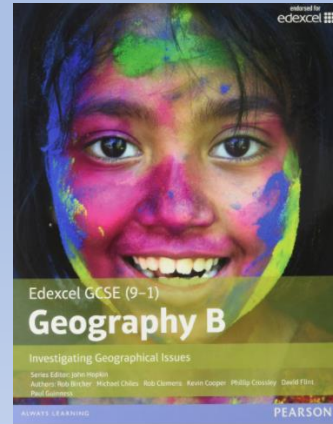
Paper 3

1 hour & 30 minutes
64 marks (25 % of qualification)

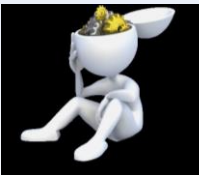
Topic 7: People and the biosphere
Topic 8: Forests under threat
Topic 9: Consuming energy resources.

Sections A to C of the exam explore the content covered in Topics 7 – 9/ Section D is a Geographical Decision Making exercise which is based on the previous 3 sections knowledge.

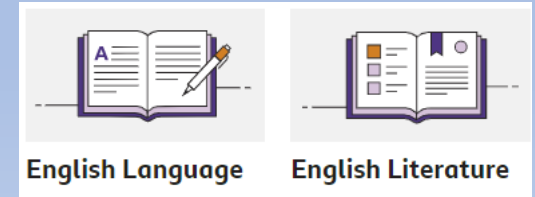
The exam includes multiple-choice questions, short open, open response and extended writing questions. Section C will include 8-mark extended writing questions and Section D will offer a choice of one from three decisions assessed through a 12-mark extended writing question.



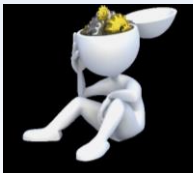
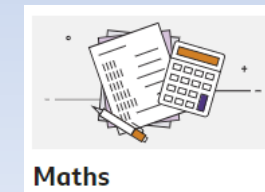
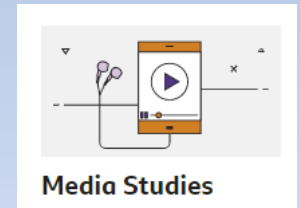
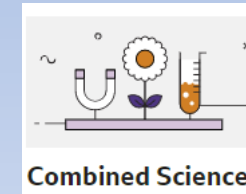
Mastery Endeavour Thinking



Links to other subjects.



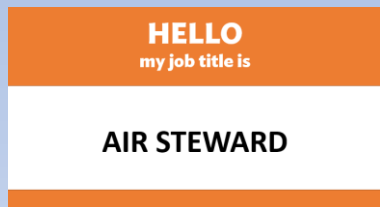
Many of our students choose to study Geography with other Humanity subjects such as Psychology, History, Sociology and Media. But Geography is complimentary to many areas such as English, Maths and Sciences.



Career Pathways.

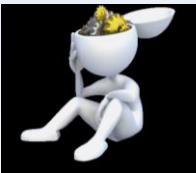


If you choose to take geography on to university there are literally hundreds of courses to choose from and the range of career areas accessed by graduates of geography will probably surprise you.

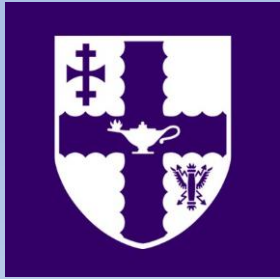


Some other potential careers paths:

- Commercial/residential surveyor.
- Environmental consultant.
- Geographical information systems officer.
- Planning and development surveyor.
- Secondary school teacher.
- Town planner.



Top 10 Universities For Geography.



University of Cambridge

University of St Andrews

University of Oxford

London School of Economics

University of Glasgow

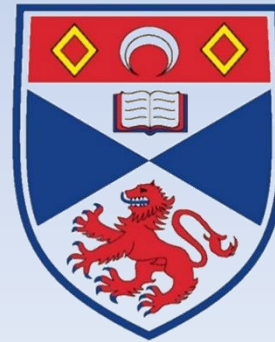
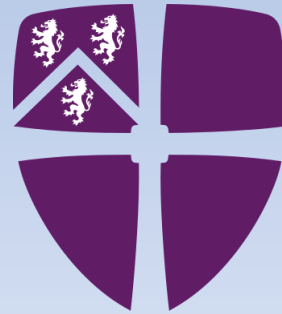
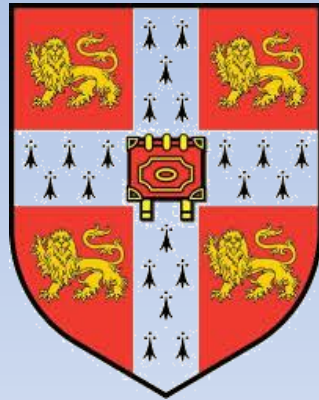
Durham University

University College London

University of Southampton

Loughborough University

University of South Wales



Mastery Endeavour Thinking

