

Holcombe Grammar – Term 2 Clubs List 2023

Name of Club	Day(s)	Year Groups able to attend	Staff Supervising	Room	How many students roughly attend?	How many students could attend (rough figure only)
A-Level Catch up Music	Tuesday After School	Year 12 and 13	JZG	C10	N/A – New Club	Max 10
Art Club	Thursdays After School (until 4:10pm)	Years 7-9	ELG	D21	N/A	N/A
Art Studio	Monday-Thursday Lunchtimes	All Year Groups	RMO	D20	N/A	N/A
Bar Mock Trial	Mondays After School (until 4pm)	N/A	SMD	M12	N/A	N/A
Book Thieves	Tuesday Lunchtimes	All Year Groups	JSL JCS	Library	20	Max 30-50
Card Game Club	Thursday Lunchtimes	All Year Groups	SHK	H13	Approx. 15	Max 30
Chess Club	Monday Lunchtimes	All Year Groups	EPU	E10	20-30	Max 30
Debate Society	Friday Lunchtimes	All Year Groups	JCS	Library	30	Max 30-50
DT Club	Thursday After School	Year 7 and 8	HAS	D13	N/A – New Club	Max 20
eDofE Drop-in Sessions	Thursday Lunchtimes (1:25-1:45pm)	Years 9-13	GPI	B15	Dependant	No Max
ExploRE (RS, Philosophy & Ethics)	Wednesday Lunchtimes	All Year Groups	HCK	M14	N/A – New Club	Max 30

Holcombe Grammar – Term 2 Clubs List 2023

French club	Wednesday Lunchtimes	KS3/KS4	SME	S15	N/A – New Club	Max 31
GCSE Business Essay Success	Thursday After School	Year 10	JET	S12	5-10	Max 22
GCSE/A Level Art and Design Drop in Support Session	Tuesdays and Fridays After School (until 4:30pm)	GCSE and A Level Students	RMO	D20	N/A	N/A
German Club	Thursday Lunchtimes	All Year Groups	SME	S15	N/A – New Club	Max 30
Graphic Novel Club	Thursday Lunchtimes	All Year Groups	AME	Library	10	Max 30
Homework Club	Tuesday, Wednesday, Thursday After school	All Year Groups	SEN Team	The Haven	7-11	Max 15
Intervention Club/Breakfast Club	8am-8:25am Every Day	Please see KJJ or BPY	KJJ	B15	Dependent	Dependent
KS3 Art Drop in	Monday to Thursday Lunchtimes	KS3 Students	RMO	D20	N/A	N/A
KS4/KS5 DT Coursework	Wednesday After School	Year 11 and 13	CDN	D10	30	Max 60
Maths Support Club	Friday After School	Years 7-10	MUI	E13	N/A	Max 20
Media Coursework Catch-up	Thursday After School	Year 11 and 13	EMS	B15	N/A	Max 30
Media Club	Tuesday After School until 4pm	All Year Groups	EMS	B15	N/A	N/A
School of Rock Rehearsals	After School 3:15pm-4:15pm (Please see the Rehearsal Schedule as the days vary per week)	N/A	NMS	Drama Studio	N/A	N/A

Holcombe Grammar – Term 2 Clubs List 2023

Science Club	Thursdays After School (until 4pm)	Years 9, 10	HAI	B23	20	Max 30
Spanish Club	Tuesday Lunchtimes	KS3/KS4	TBN	S16	N/A – New Club	Max 31
Thinking Ambassadors	Week A Thursday Lunchtimes	Thinking Ambassadors from all year groups	HOA	S16	5-8	N/A
Writer’s Round Table	Wednesday Lunchtimes	All Year Groups	JCS	Library	10	Max 30
Y10 French Support Activities	Tuesday Lunchtimes	Year 10	GSS	S14	N/A	N/A
Y11 Support Session French	Tuesday After School	Year 11	SME	S14	Dependent	Max 31
Y11 Support session- Spanish	Thursday After School	Year 11	HOA	S16	N/A	N/A
Y11 Support session French	Tuesdays After School	Year 11	SE	S14	N/A	N/A
Y11 Spanish to the next grade and beyond	Friday Lunchtimes	Year 11	HOA	S16	N/A	N/A
Y12 French	Tuesday After School until 4pm	Year 12	GSS	S14	N/A	N/A

Music

	Monday	Tuesday	Wednesday	Thursday	Friday
Break	Practice Sessions	Practice Sessions	Practice Sessions	Practice Sessions	Practice Sessions
Lunch	Sound Club – C10	Vocal Group – C10 Piano and Keyboard Club – C12	Key Stage 3 Rock Band – C9	Key Stage 4 and 5 Rock Band C9	Ukulele Club – C12 Rhythm and Blues Band – C9
Afterschool		GCSE and A-Level Catchup sessions		GCSE and A-Level Catchup Sessions	

Sports Clubs

Term 2 Sports Clubs					
w/b	MONDAY	TUESDAY	WEDNESDAY	THURSDAY	FRIDAY
30th October <i>(week B)</i>	TABLE TENNIS (ALL YEARS)	GYM (YEAR 11-13) (7.40-8.20am) GYM (YEAR 8 & 9)	YEAR 9 & 10 BASKETBALL TRIALS GCSE/ A-LEVEL PE SUPPORT (P22)	GYM (YEAR 11-13) (7.40-8.20am) YEAR 7 & 8 BASKETBALL TRIALS GYM (YEAR 7 & 10)	GYM (YEAR 11, 12 & 13) YEAR 11 BASKETBALL
6th November <i>(week A)</i>	TABLE TENNIS (ALL YEARS)	GYM (YEAR 11-13) (7.40-8.20am) GYM (YEAR 8 & 9)	█	GYM (YEAR 11-13) (7.40-8.20am) GYM (YEAR 7 & 10)	GYM (YEAR 11, 12 & 13) YEAR 11 BASKETBALL
13th November <i>(week B)</i>	TABLE TENNIS (ALL YEARS)	GYM (YEAR 11-13) (7.40-8.20am) YEAR 9 & 10 HANDBALL TRIALS GYM (YEAR 8 & 9)	YEAR 7 & 8 HANDBALL TRIALS GCSE/ A-LEVEL PE SUPPORT (P22)	GYM (YEAR 11-13) (7.40-8.20am) GYM (YEAR 7 & 10)	█
20th November <i>(week A)</i> <i>*no sports hall*</i>	TABLE TENNIS (ALL YEARS)	GYM (YEAR 11-13) (7.40-8.20am) GYM (YEAR 8 & 9)	█	GYM (YEAR 11-13) (7.40-8.20am) *MSG HANDBALL COMPETITION* GYM (YEAR 7 & 10)	GYM (YEAR 11, 12 & 13)
27th November <i>(week B)</i>	TABLE TENNIS (ALL YEARS)	GYM (YEAR 11-13) (7.40-8.20am) GYM (YEAR 8 & 9)	MSG BADMINTON TRIALS (YEAR 8 & 9) GCSE/ A-LEVEL PE SUPPORT (P22)	GYM (YEAR 11-13) (7.40-8.20am) GYM (YEAR 7 & 10)	GYM (YEAR 11, 12 & 13) YEAR 11 BASKETBALL
4th December <i>(week A)</i>	TABLE TENNIS (ALL YEARS) *MSG BADMINTON COMPETITION*	GYM (YEAR 11-13) (7.40-8.20am) GYM (YEAR 8 & 9)	BADMINTON (YEAR 7-9) GCSE/ A-LEVEL PE SUPPORT (P22)	GYM (YEAR 11-13) (7.40-8.20am) GYM (YEAR 7 & 10)	GYM (YEAR 11, 12 & 13) YEAR 11 BASKETBALL
11th December <i>(week B)</i>	TABLE TENNIS (ALL YEARS)	GYM (YEAR 11-13) (7.40-8.20am) GYM (YEAR 8 & 9)	BADMINTON (YEAR 7-9) GCSE/ A-LEVEL PE SUPPORT (P22)	GYM (YEAR 11-13) (7.40-8.20am) GYM (YEAR 7 & 10)	█

Term 2 Football Fixtures

Year group	Date	Opponent	Venue
7	Tuesday 14 th November	Hundred of <u>Hoo</u>	<i>Home</i>
8	Tuesday 14 th November	Hundred of <u>Hoo</u>	<i>Away</i>

Handball Trials

Event: MSG handball competition Thursday 23rd November

YEAR 7 & 8 –
Wednesday 15th November

YEAR 9 & 10 –
Tuesday 14th November

Badminton Trials

Event: M56 badminton competition Monday 4th December

YEAR 8 & 9 –
Wednesday 29th November

Term 2 Basketball Fixtures

Team	Date	Opponent	Venue
Year 7/8	Thursday 9 th November	Howard	Home
Year 9/10	Thursday 9 th November	Howard	Away
Year 7/8	Tuesday 21 st November	Leigh	Away
Year 9/10	Thursday 23 rd November	Hoo	Away
Year 7/8	Tuesday 28 th November	Hoo	Home
Year 9/10	Tuesday 28 th November	Leigh	Away
Year 7/8	Tuesday 5 th December	Greenacre	Away
Year 9/10	Thursday 8 th December	Greenacre	Home
Year 7/8	Tuesday 12 th December	Strood	Home
Year 9/10	Thursday 14 th December	Strood	Away

TERM 2 INTER-HOUSE SPORTS COMPETITIONS

Year 7 - Tuesday 12th December

Year 8 - Thursday 7th December

Year 9 - Monday 11th December

Year 10 - Friday 8th December

Year 11 - Wednesday 13th December

*Activities to be decided by students via a Forms survey -
watch this space!*



FAQs:

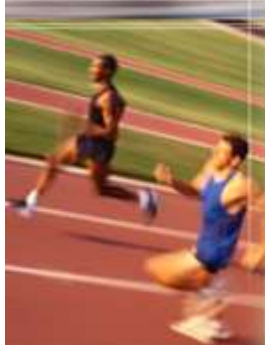
Do I need to sign up to a club?

No, just turn up at the right time & place and a teacher will be there to get you started!



What should I wear?

Either the indoor or outdoor PE kit, depending on the weather (year 12/13 wear appropriate sports kit).



What will we do at the clubs?

Most clubs involve a combination of skills practices and games/ competitions.

What do I do if I have any questions?

Speak to any member of the PE department, post a question on your PE class Teams chat, or e-mail a.nanson@tsatrust.org.uk