

Holcombe Grammar – Term 6 Clubs List

Name of Club	Day(s)	Year Groups able to attend	Staff Supervising	Room	How many students roughly attend?	How many students could attend (rough figure only)
Diversity Matters	Monday Lunchtimes	All Year Groups	CGN JSL	Library	10	Max 30
Year 9 Band	Monday Lunchtimes	Year 9	JZG	C10	6	Max 10-15
Sixth Form Drama Club	Monday Lunchtimes	Sixth Form	LSR	Drama Studio	5	Max 25
Chess Club	Tuesday Lunchtimes	All Year Groups	EPU	E10	20-30	Max 30
Book Thieves	Tuesday Lunchtimes	All Year Groups	JSL JCS	Library	20	Max 30-50
Christmas Shoebox Appeal	Tuesday Lunchtimes	All Year Groups	RMN	H13	N/A – New Club	Max 30
Seneca Support	Tuesday Lunchtimes	All Year Groups	PWN	H15	1-5	Max 15
Spanish and French Film Club	Tuesday Lunchtimes	All Year Groups	HOA	S16	Dependent	Max 31
Tangram Puzzles	Tuesday Lunchtimes	All Year Groups	JZO	E11	N/A – New Club	Max 20
Y11 Support Session French	Tuesday After School	Year 11	SME	S14	Dependent	Max 31
A-Level Catch up Music	Tuesday After School	Year 12 and 13	JZG	C10	N/A – New Club	Max 10
Writer's Round Table	Wednesday Lunchtimes	All Year Groups	JCS	Library	10	Max 30
French club	Wednesday Lunchtimes	KS3/KS4	SME	S15	N/A – New Club	Max 31
Year 8 Band	Wednesday Lunchtimes	Year 8	JZG	C10	N/A – New Club	Max 10-15

Holcombe Grammar – Term 6 Clubs List

Science Club	Wednesday After School	7, 8, 9	HAI	B23 & B25	20	Max 30
Science Club	Wednesday After School	Year 7	RCL	B22	7	Max 10
Camera Club	Wednesday After School	7, 8, 9	RMO	D20	12-15	Max 30
KS4/KS5 DT Coursework	Wednesday After School	Year 11 and 13	HAS/JMY/MWS	D10	30	Max 60
Y11 Support session- Spanish	Wednesday After School	Year 11	HOA	S16	Dependent	Max 31
Year 7 Band	Thursday Lunchtimes	Year 7	JZG	C10	N/A – New Club	Max 10-15
Film Club	Thursday Lunchtimes	All Year Groups	CFE	A21	10	Max 30
Graphic Novel Club	Thursday Lunchtimes	All Year Groups	AME	Library	10	Max 30
Spanish club	Thursday Lunchtimes	KS3/KS4	HOA/ACZ	S16	N/A – New Club	Max 31
Y11 Support session- Spanish/French	Thursday After School	Year 11	HOA/ACZ/SME	S16	Dependent	Max 31
Sound Club	Thursday After School	All Year Groups	JZG	C12	6	Max 10-15
Debate Society	Friday Lunchtimes	All Year Groups	JCS	Library	30	Max 30-50
Lego Club	Friday Lunchtimes	Year 7	JLE	H13	6-7	Max 15
Y11 to the Next Grade and Beyond	Friday Lunchtimes	Year 11	HOA	S16	Dependent	Max 31
GCSE and A - Level Band	Friday Lunchtimes	A-level and GCSE	JZG	C10	N/A – New Club	Max 10
Rhythm and Blues Band	Friday After School	All Year Groups	JZG	C10	10	Max 10-15

Holcombe Grammar – Term 6 Clubs List

Homework Club	Tuesday, Wednesday, Thursday After school	All Year Groups	SEN Team	The Haven	7-11	Max 15
Drama Production Rehearsals	Week A: Tuesday After school Week B: Tuesday and Thursday After school	All students who auditioned for the school show and are in the cast.	LSR	Hall	Approx 25	Max 30
Card Game Club	Thursday Lunchtimes	All Year Groups	SHK	H10/H12	Approx 15	Max 30
GCSE Business Essay Success	Thursday After School	Year 10	JET	S12	5-10	Max 22
eDofE Drop-in Sessions	Thursday Lunchtimes (1:25-1:45pm)	Years 9-13	GPI	H15	Dependant	No Max
DT Club	Tuesday After School	Year 7 & 8	JMY	D13	N/A – New Club	Max 20
Stop-Motion Animation Club	Thursday After School	All Year Groups	JMY	D13	N/A – New Club	Max 20
Media Coursework Catch-up	Thursday After School	Year 10 & 12	KMN	B15	N/A – New Club	Max 30

MET (Mastery Endeavour & Thinking):

Name of Club	Day(s)	Year Groups able to attend	Staff Supervising	Room	How many students roughly attend?	How many students could attend (rough figure only)
MET Year 8	Monday Lunchtimes	Year 8	KES	M10	Dependent	30
MET Year 11	Tuesday Lunchtimes	Year 11	KJJ	M13	Dependent	30
MET Year 13	Wednesday Lunchtimes	Year 13	KJJ	M13	Dependent	30
MET Year 12	Thursday Lunchtimes	Year 12	TMT	M13	Dependent	30
MET Year 9	Thursday Lunchtimes	Year 9	KES	M10	Dependent	30
MET Year 7	Friday Lunchtimes	Year 7	TMT	M13	Dependent	30
MET Year 10	Friday Lunchtimes	Year 10	KES	M10	Dependent	30

Term 5 Sports Clubs

w/b	MONDAY	TUESDAY	WEDNESDAY	THURSDAY	FRIDAY
6 th June (A) <i>*No sports hall*</i>	TABLE TENNIS (ALL YEARS)	YR 10 GYM (7.45-8.20am) YR 11 GYM (7.45-8.20am) YEAR 7 ATHLETICS TRIAL	YR 12/13 GYM (7.45-8.20am) YEAR 7 HOCKEY YEAR 8 HOCKEY GYM (ALL YEARS) YR 9 ATHLETICS TRIAL	YR 12/13 GYM (7.45-8.20am)	GYM (ALL YEARS)
13 th June (B) <i>*No sports hall*</i>	TABLE TENNIS (ALL YEARS)	YR 10 GYM (7.45-8.20am) YR 11 GYM (7.45-8.20am) YEAR 8 ATHLETICS TRIAL	YR 12/13 GYM (7.45-8.20am) YEAR 7 HOCKEY YEAR 8 HOCKEY GYM (ALL YEARS) YR 10 ATHLETICS TRIAL	YR 12/13 GYM (7.45-8.20am)	GYM (ALL YEARS)
20 th June (A) <i>*No sports hall*</i>	TABLE TENNIS (ALL YEARS)	YR 10 GYM (7.45-8.20am) YR 11 GYM (7.45-8.20am) ATHLETICS (ALL YEARS)	YR 12/13 GYM (7.45-8.20am)	YR 12/13 GYM (7.45-8.20am) *DISTRICT ATHLETICS* (9AM-3PM)	GYM (ALL YEARS)
27 th June (B)	TABLE TENNIS (ALL YEARS)	YR 10 GYM (7.45-8.20am) YR 11 GYM (7.45-8.20am)	YR 12/13 GYM (7.45-8.20am) YEAR 7 HOCKEY YEAR 8 HOCKEY GYM (ALL YEARS)	YR 12/13 GYM (7.45-8.20am)	GYM (ALL YEARS)
4 th July (A)	TABLE TENNIS (ALL YEARS)	YR 10 GYM (7.45-8.20am) YR 11 GYM (7.45-8.20am) YR 9 BASKETBALL YR 10 BASKETBALL	YR 12/13 GYM (7.45-8.20am) YEAR 7 HOCKEY YEAR 8 HOCKEY GYM (ALL YEARS)	YR 12/13 GYM (7.45-8.20am) YR 12/13 VOLLEYBALL	GYM (ALL YEARS)
11 th July (B)	TABLE TENNIS (ALL YEARS)	YR 10 GYM (7.45-8.20am) YR 11 GYM (7.45-8.20am) YR 9 BASKETBALL YR 10 BASKETBALL	YR 12/13 GYM (7.45-8.20am) YEAR 7 HOCKEY YEAR 8 HOCKEY GYM (ALL YEARS)	YR 12/13 GYM (7.45-8.20am) YR 12/13 VOLLEYBALL	GYM (ALL YEARS)
18 th July (A)	TABLE TENNIS (ALL YEARS)	YR 10 GYM (7.45-8.20am) YR 11 GYM (7.45-8.20am)	YR 12/13 GYM (7.45-8.20am) YEAR 7 HOCKEY YEAR 8 HOCKEY GYM (ALL YEARS)	YR 12/13 GYM (7.45-8.20am)	GYM (ALL YEARS)

DISTRICT ATHLETICS COMPETITION

Date: **Thursday 23rd June**

Location: Medway Park

Time: 9.00 – 3.00pm

Opposition: Every other Medway school!

Trials:

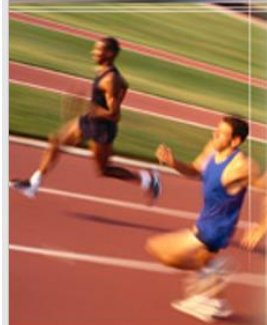
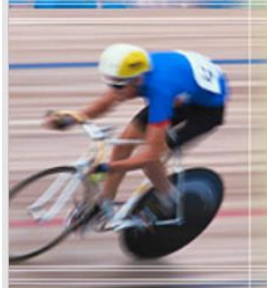
Year 7 – TUESDAY 7TH JUNE

Year 8 – TUESDAY 14TH JUNE

Year 9 – WEDNESDAY 8TH JUNE

Year 10 – WEDNESDAY 15TH JUNE

You must attend the trial to be considered for selection.



FAQs:

Do I need to sign up to a club?

No, just turn up at the right time & place and a teacher will be there to get you started!

What should I wear?

Either the indoor or outdoor PE kit, depending on the weather (year 12 wear appropriate sports kit).

What will we do at the clubs?

Most clubs involve a combination of skills practices and games/ competitions.

What do I do if I have any questions?

Speak to any member of the PE department, post a question on your PE class Teams chat, or e-mail a.nanson@tsatrust.org.uk