

# Welcome to Year 10 Information Evening



Miss Tanti (Deputy Headteacher – Outcomes)

Miss Lyons (Lead Practitioner for KS4 Outcomes)

Miss Lee (Head of Year 10)

TRANSFORMING LIFE CHANCES

# Try to recall the items on screen



- Expectations of a Year 10 Student
- Attendance
- Preliminary Examination Information
- Exam Rules
- Exam Dates (tbc)
- Revision Techniques
- What can parents do to help?
- Upcoming Yr 10 deadlines
- AI Use
- What next?
- Final challenge – student quick fire questions

# Expectations of a Year 10 Student

- Be to school on time (8:40 latest)
- Come prepared for learning (equipment/uniform/attitude)
- When in class, focused and respectful to all
- Completing all class work and homework to the best of my ability
- Behaviour around school is orderly and well mannered
- Talk to staff if concerned or worried (academic/behaviour)
- Work with us, not against us

Your attendance has a substantial impact upon your overall attainment at GCSE level.

Attendance during one school year	Equivalent Days	Equivalent Weeks	Equivalent Hours of school missed
95%	9 Days	2 Weeks	54 Hours
90%	19 Days	4 Weeks	114 Hours
85%	29 Days	6 Weeks	174 Hours
80%	38 Days	8 Weeks	228 Hours
75%	48 Days	10 Weeks	288 Hours
70%	57 Days	11.5 Weeks	342 Hours
65%	67 Days	13.5 Weeks	402 Hours

# Preliminary Examinations

- The term 6 prelim exams the will appear over a two week window
- **Students are in school for normal school hours during this time.**
- You must know your **seat number & room for each exam** – class teachers should be preparing you and letting you know when the exam will be in their subject – **each student will receive an exam timetable (mix of exam hall and classes)**
- Please eat breakfast before an exam and bring water with you!
- Your revision should have already started – little and often – use the strategies explored within your assemblies with Mrs Lyons/Miss Tanti/Mrs Morris and Miss Lee.
- This set of prelim examinations are the most accurate and realistic indication of your progress in Yr 10. Therefore, these are incredibly important.

- **Arrive at school to register at 8.40am and 1pm for the exams. You must attend lineup at 8:30 so that your tutor can register and escort you up to your exams.**  
(take into account the traffic)
- **If you are running late, please phone the school**
- Students will line up as normal unless stipulated otherwise (i.e. a core exam)
- **No mobile phones**, watches of any kind, iPods, earphones (inc. AirPods) and MP3s or calculators unless permitted ( these should all be in your bag which will be locked away)
- You should not have notes on your possession ( please check your blazer pockets)
- You must bring black pen - **NO GEL PENS**
- Only clear pencil cases are allowed on your desk
- There is absolutely **no talking or communication** between students
- **Full uniform** must be worn for the exam. Your blazer must be worn to enter the hall and kept on the back of your chair if taken off.
- No food is allowed in all examination rooms
- Water bottles are allowed in the exam hall if necessary. These should be clear bottles with a spill-proof cap, water only in the bottles. There should be no label or print on the bottle.

# Preparing for the Examinations

- You will be given an exam timetable – keep it safe!
- Have you got a quiet place to study? If not, what are you doing about it.
- Have you got the necessary **revision guides**? Have you got your **revision materials** from PM reg and homeworks?
- Have you got the class notes?
- Have you devised a **revision timetable**? Did you **attend a drop-in** with Miss Tanti and Mrs Lyons. If not, look out for the next one.
- Do you know what the exam paper is going to look like( eg How many questions and what it entails, the topics being examined?)



## ● DO

1. Make a list of all the topics you need to revise.
2. Create a realistic schedule.
3. Plan ahead by working backwards
4. Revise using your preferred learning style.
5. Take breaks and chunk working time (no more than 40 minutes)

## ● DON'T

**Just keep going!** The body and the mind need regular 'time-outs'.  
Use breaks effectively, particularly after completing a task.

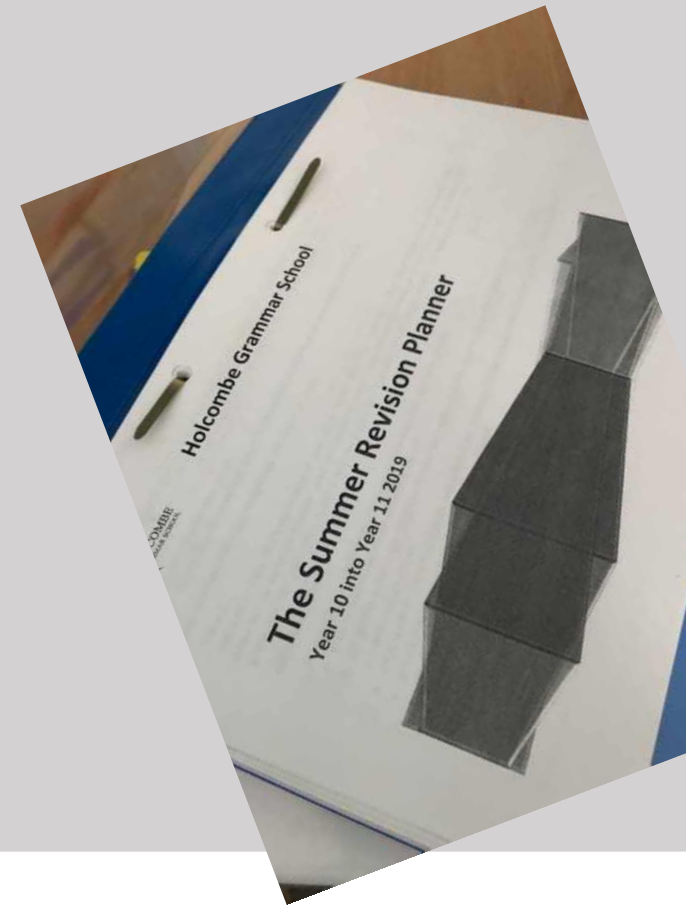
# What is missing?




# Did you correctly identify the missing items?



# Year 10 into 11 Summer Revision Packs




Explain and describe ideas with many details




Practice bringing information to mind

WRITE OR SKETCH



Use specific examples to understand abstract ideas



ACB CBA P TOPICS

Switch between ideas while you study

Combine words and visuals



## REVISION PLANNER

Week beginning: \_\_\_\_\_

	Monday	Tuesday	Wednesday	Thursday	Friday	Saturday	Sunday
9 am							
10 am							
11 am							
12 noon							
1 pm							
2 pm							
3 pm							
4 pm							
5 pm							
6 pm							
7 pm							
8 pm							



# Additional resources – where to find them



We have folders and plastic wallets to help you organise your revision.

You can collect some from Miss Tanti's office. Some of you have already collected them

## Personalised Learning Check List

**Subject:-** Biology

Using the information in both the topic and sub topic areas please indicate in the right hand columns which you understand and know well, need to go over again, need to sit down and revise.

Topic	Sub -Topic	Little work GREEN ☹☹☹	Some work AMBER ☹☹☹	Lots of work RED ☹☹☹
Combined 4.1	• 4.1 Cell biology	_____	_____	_____
	• 4.1.1 Cell structure	_____	_____	_____
	• 4.1.1.1 Eukaryotes & Prokaryotes	_____	_____	_____
	• 4.1.1.2 Animal & plant cells	_____	_____	_____
	• <b>Practical : Use a light microscope to observe, draw and label plant and animal cells. Magnification scale MUST be included</b>	_____	_____	_____
	• 4.1.1.3 Cell specialisation	_____	_____	_____
4.1.2	• 4.1.2 Cell Division	_____	_____	_____
	• 4.1.2.1 Chromosomes	_____	_____	_____
	• 4.1.2.2 Mitosis and cell cycle	_____	_____	_____
4.1.3	• 4.1.2.3 Stem cells	_____	_____	_____
	• 4.1.3 Transport in cells	_____	_____	_____
	• 4.1.3.1 Diffusion	_____	_____	_____

Students received PLC's at the end of year 9 from me

These should have been ragged by students. If they haven't been ragged, that must be a priority

Red – no knowledge of the content

Amber – some knowledge of it  
Green – knowledge is secure

If they have been misplaced, subject teachers may have spare copies

- Students will be given summer revision packs.
- The aim of this pack is to help students do some revision over the summer to help them get ready for their prelim exams.
- The pack contains:
  - A4 paper, lined paper, A3 paper, Post It Notes and some stationery, revision planner booklet, revision timetable template and information on different revision techniques

- Mind mapping
- Put diagrams up in the house
- Talking to somebody
- Questioning each other
- Flash cards
- Talk out loud
- Even record yourself
- Condense notes
- Highlight notes
- Test yourself
- Time yourself doing past paper questions
- Use websites e.g bitesize or mymaths



**ALL REVISION and REVIEW should be ACTIVE.**

Simply re-reading your notes isn't good enough.  
Do something with your notes..

Re-write your notes as MIND MAPS o  
Create FLASH CARDS or MEMORY RHYMES  
TEACH someone else what you've learned  
APPLY your knowledge



# Example Revision Resources

Alcohols such as ethanol and methanol are used as solvents in industry. They are also used as fuels. Ethanol can be made by fermentation. The general formula is  $C_nH_{2n+2}O$ . Methanol is  $CH_3OH$ . Ethanol is  $C_2H_5OH$ . Aldehydes are formed by the oxidation of alcohols. The general formula is  $C_nH_{2n}O$ . Ketones are formed by the oxidation of secondary alcohols. The general formula is  $C_nH_{2n}O$ . Carboxylic acids are formed by the oxidation of primary alcohols. The general formula is  $C_nH_{2n}O_2$ .

The power output of the turbine is directly proportional to the kinetic energy of the air passing the blades each second.

Describe the effect on the power output when the wind speed is halved.

At a different wind speed, the wind turbine has a power output of 300 kW. The mass of air passing the wind turbine each second is 13 800 kg. Calculate the speed of the air passing the blades each second.

Assume that the process is 100% efficient.

Speed of air = ... m/s

When was France Invaded ...

$C_2H_4 + O_2 \rightarrow CO_2 + H_2O$

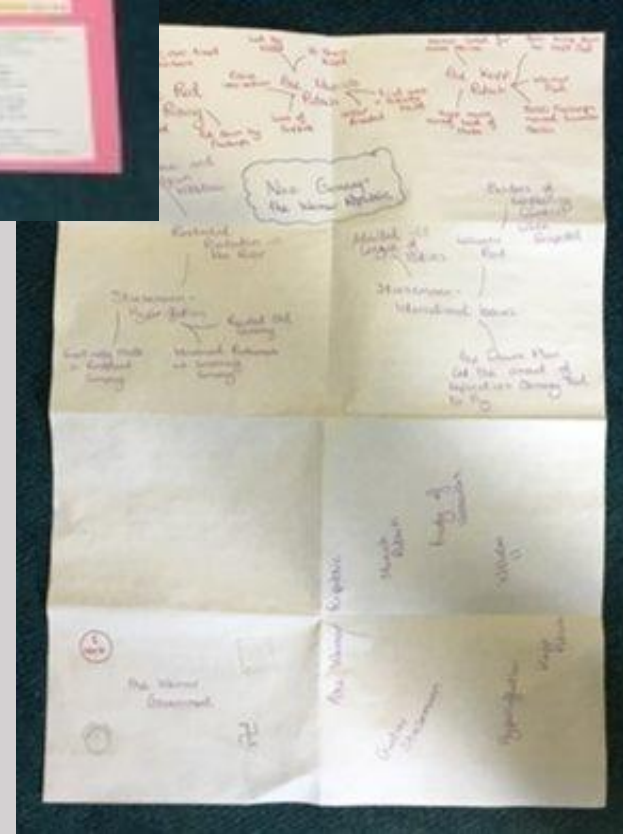
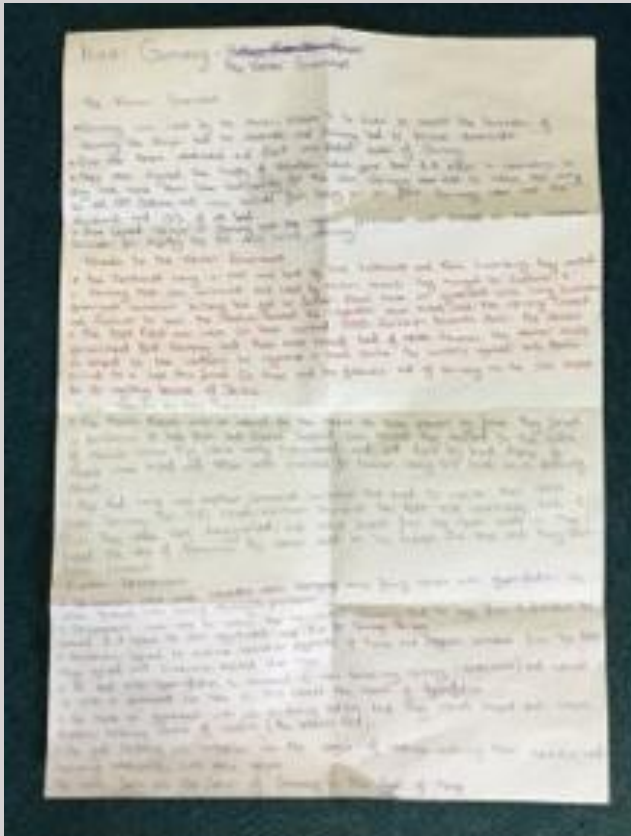
Mind maps detailing various topics in chemistry and biology, including chemical reactions and biological processes.

Chromatography

Chemical Analysis

Spot	R <sub>f</sub>	Colour
1	0.1	Blue
2	0.2	Red
3	0.3	Yellow
4	0.4	Green
5	0.5	Purple
6	0.6	Orange
7	0.7	Brown
8	0.8	Pink
9	0.9	White

# Example Revision Resources



# How do we celebrate achievement?

- Postcards home (behavior, ATL, progress amongst other elements)
- Tutor awards
- Head of Year awards
- Subject awards
- Magazine articles
- Positive emails home
- Reward / Prizes for AM reg tasks
- Pulse Check-ins (chance to say thank you)

# What can you do to help?

- Attendance - students have to be here to learn
- Encourage your child to be well equipped for their lessons which will help them in their prelims
- Study Buddy – question & answer sessions, quiz them,
- Entertainment – time to work time to play. Ensure balance between study and rest (and monitoring social networking time)
- Reward for effort (not bribery!)
- Contact school for support – via your child's form tutor first
- Keep students focused on work
- Revision timetable - help them plan ahead
- Encourage attendance to revision sessions after school, if possible

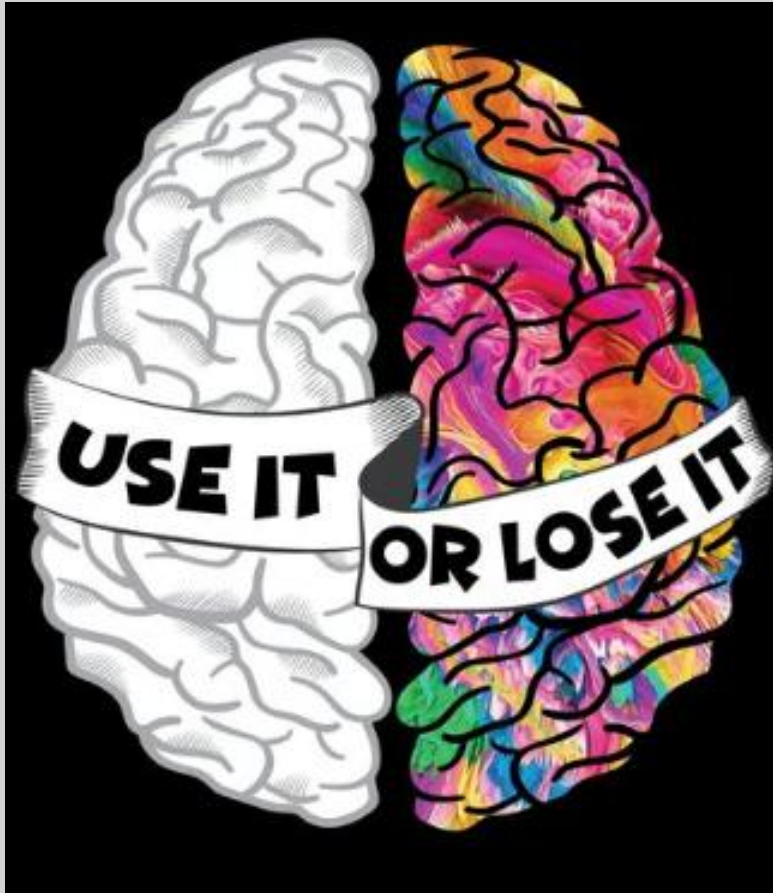
Please ensure you have collected an Information Evening booklet!

# Upcoming Deadlines for Students



DT - Two Making days will run in Easter half term. Please make arrangements to allow students to attend. Dates To be confirmed. NEA coursework final assessment to allow for adjustments/improvements - 18th April 2025.  
NEA/Practical- 26th April 2025.

# Use it or Lose it...



- In order to grow our muscles, we need to provide a stimulus – like lifting weights in the gym – followed by a period of rest.
- The opposite also happens – if we stop going to the gym or if we stop using a limb after breaking a bone – our muscles get smaller.



# AI, Coursework and Assessments: A quick guide for parents / students

# What is AI?

- AI stands for artificial intelligence and using it is like having a computer that thinks
- AI tools like ChatGPT or Snapchat My AI can write text, make art and create music by learning from data from the internet, but watch out – they can also make things up and be biased

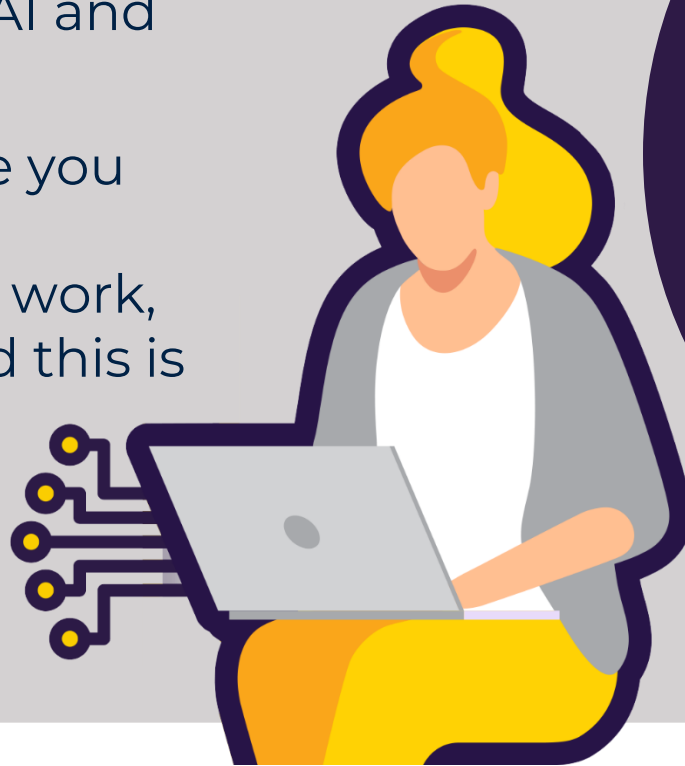




# How can AI be misused in coursework, assessments and examinations?

AI misuse is when you take something made using AI and say it's your own work.

If you use sources to give you good examples and you present this as your own work, you will be penalised and this is cheating.



**THIS IS  
CHEATING!**

# How do I make sure I don't misuse AI?

- 1** Know the rules for your subjects, use the examination criteria and spec to help you making the right choices.
- 2** Reference reference reference, if you have used anything that isn't your own work!
- 3** Declare it's all your own work



# 1

## Know the rules!

- You're not allowed to use AI tools when you're in an exam, even if you have used it for revision it is not okay, and an examiner may notice it and you could get disqualified from that exam.
- Your teachers will tell you if you're allowed to use AI tools when doing your coursework – the rules will depend on your qualification, but getting a form of AI to do the work for you is cheating.
- Even if you're allowed to use AI tools, you can't get marks for content produced by AI – your marks come from showing your own understanding and producing your own work, you will need to provide evidence to support what you have used.



# 2

## Reference reference reference!

If you're allowed to use AI tools, you must reference them clearly, if you don't it is cheating as it is not your own work.

- Name the AI tool you used
- Add the date you generated the content
- Explain how you used it
- Save a screenshot of the questions you asked and the answers you got



# 3

## Declare it's all your own work

- When you hand in your coursework or an assessment, you have to sign a declaration, if it is not your own work you will get found out.
- Anything without a reference must be all your own work
- If you've used an AI tool, don't sign the declaration until you're sure you've added all the references
- Your teacher may also refuse to sign the sheet if they think that you have used something to help you that isn't your own work.



# What happens if I misuse AI?

If you've misused AI, you could lose your marks for the coursework, an assessment – you could even be disqualified from the subject.

**DON'T RISK IT!**



There are posters going up around the school, read them.



AI and Assessments

A quick guide for students



### What Is AI?

- AI stands for artificial intelligence and using it is like having a computer that thinks
- AI tools like ChatGPT or Snapchat My AI can write text, make art and create music by learning from data from the internet, but watch out – they can also make things up and be biased



### How can AI be misused in assessments?

AI misuse is when you take something made using AI and say it's your own work.

**THIS IS CHEATING!**



### How do I make sure I don't misuse AI?



- 1 Know the rules**
  - o You're **not allowed** to use AI tools when you're in an exam
  - o Your teachers will tell you if you're allowed to use AI tools when doing your coursework – the rules will depend on your qualification
  - o Even if you're allowed to use AI tools, you can't get marks for content just produced by AI – your marks come from showing your own understanding and producing your own work
- 2 Reference reference reference!**

If you're allowed to use AI tools, you must reference them clearly

  - o Name the AI tool you used
  - o Add the date you generated the content
  - o Explain how you used it
  - o Save a screenshot of the questions you asked and the answers you got
- 3 Declare it's all your own work** – When you hand in your assessment, you have to sign a declaration. Anything without a reference must be all your own work. If you've used an AI tool, don't sign the declaration until you're sure you've added all the references

### REMEMBER

Misusing AI is cheating!

Know the rules

Talk to your teachers

Reference clearly

### What happens if I misuse AI?

If you've misused AI, you could lose your marks for the assessment – you could even be disqualified from the subject.

**DON'T RISK IT!**



**DON'T RISK IT!**  
**It is cheating and Malpractice**



ICES

Remember: Misusing AI is cheating!



## **REMEMBER**

**Misusing AI is cheating!**

Know the rules

Talk to your teachers

Reference clearly

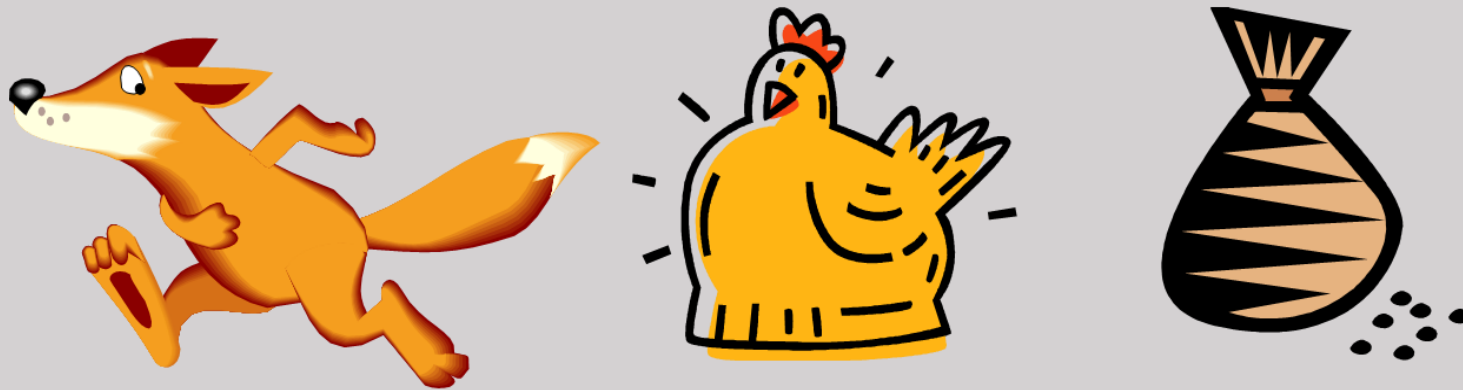


- **Produce a revision timetable!**
- **Seek advice and support from your teachers**
- **Revise** for your Prelim Examinations (these are the grades that you will need to put on any references you complete).
- **Use Unifrog to research the range of opportunities that are available to you**
- Ensure you are looking for the right courses or apprenticeships for you
- **Attend** Open days/evenings in Year 11 – start exploring both Plan A and Plan B

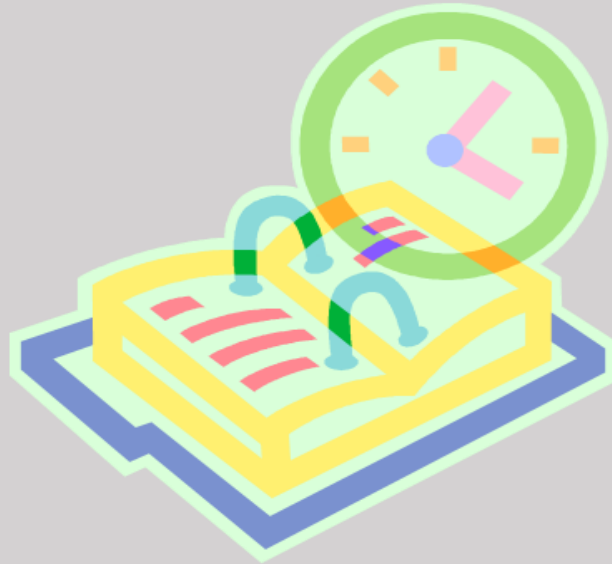
Rats can breed very quickly. Joe starts with 2 rats and finds that 6 months he ends up with 40 rats. How many rats would he end up with after 6 months if he started with 1 rat?



A man has a fox, a hen and a bag of corn. He needs to take all 3 across the river. The boat will take him and one of them. He cannot leave the fox and the hen together or the hen and corn together. How does he get all 3 across uneaten?



Where is a day longer than a year?



# Any Questions – please ask a member of staff

**Miss Tanti** – Deputy Headteacher - Outcomes

**Miss Lyons** – Lead Practitioner for KS4 Outcomes

**Miss Lee** – Head of Year 10

Information for Sixth Form will be shared with students prior to the Open Evening in Year 11.