

Holcombe Grammar School – Term 6 Clubs List 2026

Name of Club	Day(s)	Year Groups able to attend	Staff Supervising	Room	How many students roughly attend?	How many students could attend (rough figure only)
<b>Art Studio</b>	Thursday-Friday	KS4 & 5	RMO	D20	N/A	N/A
<b>Book Thieves</b>	Tuesday Lunchtimes	All Year Groups	JSL	Library	20	Max 30-50
<b>Card Game Club</b>	Thursday Lunchtimes	All Year Groups	SHK	H13	Approx. 15	Max 30
<b>Chess Club</b>	Week A Monday Lunchtimes  Week B Tuesday Lunchtimes	All Year Groups	TES	E11	20-30	Max 30
<b>Dobble and board game club</b>	Wednesday Lunchtimes	Years 7 & 8	ALA	E12	N/A	Max 20
<b>eDofE Drop-in Sessions</b>	Thursday Lunchtimes (1:25-1:45pm)	Years 9-13	GPI	B15	Dependant	No Max
<b>GCSE/A Level Art and Design Drop-in Support Session</b>	Tuesdays and Fridays After School (until 4:30pm)	GCSE and A Level Students	RMO	D20	N/A	N/A
<b>History Club</b>	Friday Lunchtimes	All Year Groups	NTN	H23	N/A	50
<b>Intervention Club/Breakfast Club</b>	8am-8:25am Every Day	Please see KJJ	KJJ	B15	Dependent	Dependent
<b>JET (Junior Engineering &amp; Technology) Club</b>	Tuesday After school (until 4pm)	KS3	CUE	B22	N/A	Limited – first come first served
<b>KS3 Spanish Club</b>	Wednesday Lunchtimes	KS3	JJS	S14	N/A	N/A

Holcombe Grammar School – Term 6 Clubs List 2026

<b>KS4 DT Coursework</b>	Tuesday After School	Year 11	HAS	D10	30	Max 60
<b>Made for Stage/ Technical Theatre Club</b>	Monday Lunchtimes	All Year Groups	NMS	Drama Studio	N/A	N/A
<b>Manga/Anime</b>	Wednesday Lunchtime	All Year Groups	SBH	S15	N/A	N/A
<b>Maths Club</b>	Thursday Lunchtime	Years 7-11	JCW	E12	N/A	N/A
<b>Media Club</b>	Wednesday Lunchtime	All Year Groups	EMS	B15	N/A	N/A
<b>Media Coursework Catch-up</b>	Tuesday After School	Year 11 and 13	EMS	B15	N/A	Max 30
<b>Religion, Philosophy &amp; Ethics Club</b>	Tuesday Lunchtimes	Years 7-9	HCK	M14	30	31
<b>Royal Society of Chemistry Olympiad club / med soc</b>	Tuesday After School	Year 12 and 13	SBE	B12	N/A	N/A
<b>Spelling Bee Training</b>	Friday Lunchtime		SBH	S15	N/A	N/A
<b>Tabletop/Warhammer Club</b>	Friday Afterschool	All Year Groups	JPE	H24	N/A	N/A
<b>Thinking Ambassadors &amp; KS3 Revision Support</b>	Wednesday Lunchtimes	KS3	ABS	H11	N/A	N/A
<b>Warhammer Battle Honours</b>	Monday After School (until 4pm)	Year 7	CZT	D10	N/A	Max 12
<b>Y11 Support Drop-In Session</b>	Tuesday After School	Year 11	JJS	S14	N/A	N/A
<b>Y11 Support Session – Spanish</b>	Thursday and Friday After School	Year 11	ACA	S10	N/A	N/A
<b>Y7 French Club</b>	Thursday Lunchtimes	Year 7	KWA	S17	N/A	N/A
<b>Y13 Law Revision</b>	Week B Thursday After School	Year 13	SMD	M12	N/A	N/A

**Music**

	<b>Monday</b>	<b>Tuesday</b>	<b>Wednesday</b>	<b>Thursday</b>	<b>Friday</b>
<b>Break</b>	Practice Sessions	Practice Sessions	Practice Sessions	Practice Sessions	Practice Sessions
<b>Lunch</b>	Sound Club C10	Piano and Keyboard Club C12	Key Stage 3 Rock Band C9	Key Stage 3 Rock Band C9	Jazz/R&B Band C9
<b>Afterschool</b>		GCSE and A-Level Catchup sessions		GCSE and A-Level Catchup Sessions	

**Sports Clubs**

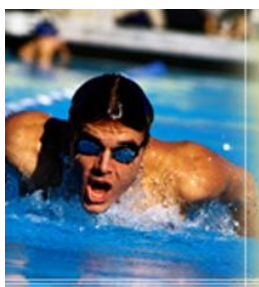
<b>Term 6 PE Clubs</b>					
w/b	MONDAY	TUESDAY	WEDNESDAY	THURSDAY	FRIDAY
<b>1<sup>st</sup> June</b> (week B) <i>*No sports hall*</i>	TABLE TENNIS (ALL YEARS)	CRICKET (ALL YEARS) <i>YEAR 10 GCSE PE EXTENSION SESSION</i>		NETBALL (SIXTH FORM) ROUNDERS (YEAR 7 & 8) HOCKEY (ALL YEARS)	GYM (ALL YEARS)
<b>8<sup>th</sup> June</b> (week A) <i>*No sports hall*</i>	TABLE TENNIS (ALL YEARS)	CRICKET (ALL YEARS) <i>YEAR 10 GCSE PE EXTENSION SESSION</i>	GYM (ALL YEARS)	NETBALL (SIXTH FORM) ROUNDERS (YEAR 7 & 8) HOCKEY (ALL YEARS)	GYM (ALL YEARS)
<b>15<sup>th</sup> June</b> (week B) <i>*No sports hall*</i>	TABLE TENNIS (ALL YEARS)	CRICKET (ALL YEARS) <i>YEAR 10 GCSE PE EXTENSION SESSION</i>		NETBALL (SIXTH FORM) ROUNDERS (YEAR 7 & 8) HOCKEY (ALL YEARS)	GYM (ALL YEARS)
<b>22<sup>nd</sup> June</b> (week A) <i>*No sports hall*</i>	TABLE TENNIS (ALL YEARS)	CRICKET (ALL YEARS) <i>YEAR 10 GCSE PE EXTENSION SESSION</i>		NETBALL (SIXTH FORM) ROUNDERS (YEAR 7 & 8) HOCKEY (ALL YEARS)	GYM (ALL YEARS) BASKETBALL (YEAR 12)
<b>29<sup>th</sup> June</b> (week B)	TABLE TENNIS (ALL YEARS)	CRICKET (ALL YEARS) <i>YEAR 10 GCSE PE EXTENSION SESSION</i>	GYM (ALL YEARS)	NETBALL (SIXTH FORM) ROUNDERS (YEAR 7 & 8) HOCKEY (ALL YEARS)	GYM (ALL YEARS) BASKETBALL (YEAR 12)
<b>6<sup>th</sup> July</b> (week A)	<b>Culture Week – NO CLUBS</b>				
<b>13<sup>th</sup> July</b> (week B)	TABLE TENNIS (ALL YEARS)	CRICKET (ALL YEARS) <i>YEAR 10 GCSE PE EXTENSION SESSION</i>	GYM (ALL YEARS)	NETBALL (SIXTH FORM) ROUNDERS (YEAR 7 & 8) HOCKEY (ALL YEARS)	

# Term 6 Lunchtime PE Clubs

**1.20-1.45pm**

*\*Bring a pair of trainers or change into your PE kit\**

<b>THURSDAY</b>	<i>Gym (all years)</i>
<b>FRIDAY</b>	<i>Gym (all years)</i>



## FAQs:

### **Do I need to sign up to a club?**

No, just turn up at the right time & place and a teacher will be there to get you started!



### **What should I wear?**

Either the indoor or outdoor PE kit, depending on the weather (year 12/13 wear appropriate sports kit).



### **What will we do at the clubs?**

Most clubs involve a combination of skills practices and games/ competitions.

### **What do I do if I have any questions?**

Speak to any member of the PE department, post a question on your PE class Teams chat or e-mail [andrew.nanson@holcombegrammar.tsat.uk](mailto:andrew.nanson@holcombegrammar.tsat.uk)