

Holcombe Grammar School – Term 2 Clubs List 2024

Name of Club	Day(s)	Year Groups able to attend	Staff Supervising	Room	How many students roughly attend?	How many students could attend (rough figure only)
Art Studio	Monday-Thursday Lunchtimes	All Year Groups	RMO	D20	N/A	N/A
Book Thieves	Tuesday Lunchtimes	All Year Groups	JSL	Library	20	Max 30-50
Card Game Club	Thursday Lunchtimes	All Year Groups	SHK	H13	Approx. 15	Max 30
Chemistry Lunch Intervention (Year 11)	Monday and Tuesday Lunchtimes (starts at 1:30pm)	Year 11	SSA	B13	N/A	N/A
Chemistry Lunch Intervention (Year 12)	Friday Lunchtimes (starts at 1:30pm)	Year 12	SSA	B13	N/A	N/A
Chemistry Lunch Intervention (Year 13)	Wednesday and Thursday Lunchtimes (starts at 1:30pm)	Year 13	SSA	B13	N/A	N/A
Chess Club	Thursday Lunchtimes	All Year Groups	EHL	E10	20-30	Max 30
Chitty Chitty Bang Bang Principal Cast Rehearsals	Monday Lunchtimes	Production Cast	LWS	Dance Studio	N/A	N/A

Holcombe Grammar School – Term 2 Clubs List 2024

Chitty Chitty Bang Bang Rehearsals	Tuesday After School 3:15pm-5pm	Production Cast	LWS & NMS	Dance Studio	N/A	N/A
Debate Society	Friday Lunchtimes	All Year Groups	PHS	Library	30	Max 30-50
eDofE Drop-in Sessions	Thursday Lunchtimes (1:25-1:45pm)	Years 9-13	GPI	B15	Dependant	No Max
French Club	Wednesday Lunchtimes	KS3/KS4	SME	S14	N/A – New Club	Max 31
GCSE/A Level Art and Design Drop-in Support Session	Tuesdays and Fridays After School (until 4:30pm)	GCSE and A Level Students	RMO	D20	N/A	N/A
German Club	Thursday Lunchtimes	All Year Groups	SME	S14	N/A – New Club	Max 30
Harry Potter Coding Club	Wednesday Lunchtimes	Year 7 and 8	JLE	H11	N/A	N/A
Intervention Club/Breakfast Club	8am-8:25am Every Day	Please see KJJ or BPY	KJJ	B15	Dependent	Dependent
KS3 Science Club	Thursday After school 3:10pm-4:10pm	KS3 Students	TOH LDN	B12	N/A	N/A
KS4 DT Coursework	Tuesday After School	Year 11	HAS	D10	30	Max 60
Maths Support Club	Friday After School	Years 7-10	MUI	E13	N/A	Max 20
Media Coursework Catch-up	Tuesday After School	Year 11 and 13	EMS	B15	N/A	Max 30
Media Club	Thursday After School	All Year Groups	EMS	B15	N/A	N/A
National Theatre	Wednesday Lunchtimes	N/A	NMS	Drama Studio	N/A	N/A

Holcombe Grammar School – Term 2 Clubs List 2024

Connections Rehearsals						
Psychology and Sociology Club	Wednesday Lunchtimes	Years 7-9	KJJ	M11	N/A	N/A
Science Club	Thursdays After School (until 4pm)	Years 9, 10	HAI	B23	20	Max 30
The Delta δ Club (Maths Club)	Wednesday Lunchtime	Year 7, 8, 9	JCW	E12	N/A	N/A
Thinking Ambassadors	Week A Thursday Lunchtimes	Thinking Ambassadors from all year groups	HOA	S16	5-8	N/A
Y10 French Support Activities	Tuesday Lunchtimes	Year 10	GSS	S14	N/A	N/A
Y11 Spanish to the next grade and beyond	Friday Lunchtimes	Year 11	HOA	S16	N/A	N/A
Y11 Support session French	Thursdays After School	Year 11	SE	S14	N/A	N/A
Y11 Support Session Spanish	Tuesday After School	Year 11	SME	S14	Dependent	Max 31
Y11 Support session-Spanish	Thursday After School	Year 11	HOA	S16	N/A	N/A
Y11 Support Session – Spanish	Thursday and Friday After School	Year 11	ACA	S10	N/A	N/A
Y12 French	Tuesday After School until 4pm	Year 12	GSS	S14	N/A	N/A
Y7 French Club	Thursday Lunchtimes	Year 7	KWA	S17	N/A	N/A

Music

	Monday	Tuesday	Wednesday	Thursday	Friday
Break	Practice Sessions	Practice Sessions	Practice Sessions	Practice Sessions	Practice Sessions
Lunch	Sound Club C10 Week B – Rap Workshop C10	Piano and Keyboard Club C12 Week A – Rap Workshop C10	Key Stage 3 Rock Band C9	Vocal group and coaching Key Stage 3 Rock Band C9	Jazz/ R&B Band C9
Afterschool		GCSE and A-Level Catchup sessions		GCSE and A-Level Catchup Sessions	

Sports Clubs

Term 2 PE Clubs *All clubs run 3.10-4.00pm unless stated otherwise*

w/b	MONDAY	TUESDAY	WEDNESDAY	THURSDAY	FRIDAY
4 th November (Week B)	█		GCSE/ A-LEVEL PE SUPPORT (P22) YEAR 7 & 8 BASKETBALL TRIALS	GYM (YEAR 11-13) (7.40-8.20am) GYM (YEAR 7) YEAR 9 & 10 BASKETBALL TRIALS	GYM (YEAR 8-13) BADMINTON (ALL YEARS)
11 th November (Week A)	TABLE TENNIS (ALL YEARS)	GYM (YEAR 11-13) (7.40-8.20am) *BASKETBALL FIXTURES*	█	GYM (YEAR 11-13) (7.40-8.20am) GYM (YEAR 7) *BASKETBALL FIXTURES*	GYM (YEAR 8-13) YEAR 7, 8 & 9 BADMINTON TRIALS
18 th November (Week B)	TABLE TENNIS (ALL YEARS)	GYM (YEAR 11-13) (7.40-8.20am) *BASKETBALL FIXTURES*	GYM (YEAR 11-13) (7.40-8.20am) GCSE/ A-LEVEL PE SUPPORT (P22) GYM (YEAR 8-13)	GYM (YEAR 11-13) (7.40-8.20am) GYM (YEAR 7) *BASKETBALL FIXTURES*	█
25 th November (Week A) *No Sports hall*	TABLE TENNIS (ALL YEARS)	GYM (YEAR 11-13) (7.40-8.20am) *BASKETBALL FIXTURES*	█	GYM (YEAR 11-13) (7.40-8.20am) GYM (YEAR 7) *BASKETBALL FIXTURES*	GYM (YEAR 8-13)
2 nd December (Week B)	TABLE TENNIS (ALL YEARS)	GYM (YEAR 11-13) (7.40-8.20am) *BASKETBALL FIXTURES*	GYM (YEAR 11-13) (7.40-8.20am) GCSE/ A-LEVEL PE SUPPORT (P22) GYM (YEAR 8-13)	GYM (YEAR 11-13) (7.40-8.20am) GYM (YEAR 7) *BASKETBALL FIXTURES*	GYM (YEAR 8-13) BADMINTON (ALL YEARS)
9 th December (Week A)	TABLE TENNIS (ALL YEARS)	GYM (YEAR 11-13) (7.40-8.20am) *BASKETBALL FIXTURES*	GYM (YEAR 11-13) (7.40-8.20am) YEAR 11 INTER-HOUSE GCSE/ A-LEVEL PE SUPPORT (P22) GYM (YEAR 8-13)	GYM (YEAR 11-13) (7.40-8.20am) GYM (YEAR 7) *BASKETBALL FIXTURES*	GYM (YEAR 8-13) YEAR 9 INTER-HOUSE BADMINTON (ALL YEARS)
16 th December (Week B)	TABLE TENNIS (ALL YEARS) YEAR 10 INTER-HOUSE	GYM (YEAR 11-13) (7.40-8.20am) YEAR 8 INTER-HOUSE *BASKETBALL FIXTURES*	GYM (YEAR 11-13) (7.40-8.20am) GCSE/ A-LEVEL PE SUPPORT (P22) GYM (YEAR 8-13)	GYM (YEAR 11-13) (7.40-8.20am) YEAR 7 INTER-HOUSE GYM (YEAR 7) *BASKETBALL FIXTURES*	█

A poster for basketball trials. On the left, there is a basketball hoop with a net and a basketball. The background is a light grey with some bokeh light effects. The text is centered and uses a mix of purple and black colors.

BASKETBALL TRIALS

YEAR 7 & YEAR 8:
WEDNESDAY 6TH NOVEMBER

YEAR 9 & YEAR 10:
THURSDAY 7TH NOVEMBER

A poster for badminton trials. The background is a light grey with a blurred image of badminton rackets and a shuttlecock. The text is centered and uses red, black, and blue colors.

BADMINTON TRIALS

The MSG badminton competition takes place on Monday 2nd December (8.30am-3pm).

Trials for this competition will take place on **FRIDAY 15TH NOVEMBER.**

(Year 7 – Year 9)

Please ensure that you attend the trial if you would like to be considered for selection.



FAQs:

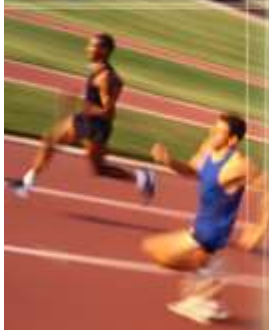
Do I need to sign up to a club?

No, just turn up at the right time & place and a teacher will be there to get you started!



What should I wear?

Either the indoor or outdoor PE kit, depending on the weather (year 12/13 wear appropriate sports kit).



What will we do at the clubs?

Most clubs involve a combination of skills practices and games/ competitions.

What do I do if I have any questions?

Speak to any member of the PE department, post a question on your PE class Teams chat, or e-mail a.nanson@tsatrust.org.uk